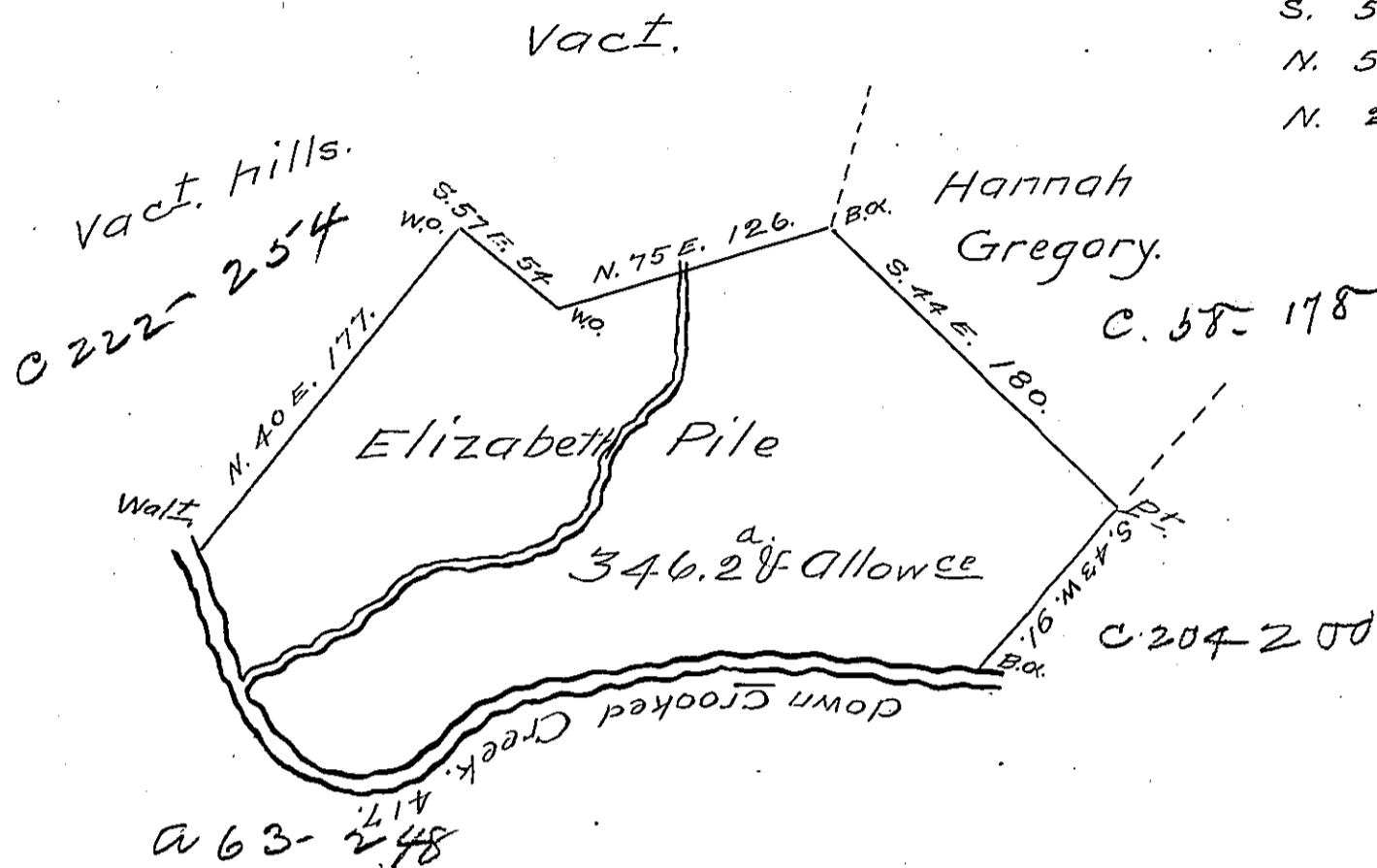


Courses & Distances
on the Creek.

N. 83 W. 126.
S. 80 W. 100.
S. 56 W. 68.
N. 58 W. 44.
N. 20 W. 79.



Survey'd to Elizabeth Pile on the 11th Day of
December 1773 The above Described Tract of three
Hundred forty six Acres & a Quarter of an acre &
the usual Allowance of six & Ct. Situate on the
North Side of crooked Creek Opposite Matthew
Irwin in Westmorland County. By Warrant of
the 23^d. Day of July 1773 No 4.
J Joshua Elder D.S.

To John Lukens Esq^r
S. Gen^l.

IN TESTIMONY that the above is a copy of the original remaining on file in
the Department of Internal Affairs of Pennsylvania, made
conformably to an Act of Assembly approved the 16th day of
February, 1833, I have hereunto set my Hand and caused
the Seal of said Department to be affixed at Harrisburg,
this Thirtieth day of April 1906.

Isaac P. Brown
Secretary of Internal Affairs.